

Chapter 11

APPROXIMATIONS FOR ANALOG FILTERS

11.1 Introduction, 11.2 Basic Concepts
11.3-11.7 Butterworth, Chebyshev, Inverse-Chebyshev,
Elliptic, and Bessel-Thomson Approximations

Copyright © 2018 Andreas Antoniou
Victoria, BC, Canada
Email: aantoniou@ieee.org

July 10, 2018

Introduction

- As mentioned in previous presentations, the solution of the approximation problem for recursive filters can be accomplished by using *direct* or *indirect* methods.

Introduction

- As mentioned in previous presentations, the solution of the approximation problem for recursive filters can be accomplished by using *direct* or *indirect* methods.
- In indirect approximation methods, digital filters are designed indirectly through the use of corresponding analog-filter approximations.

Introduction

- As mentioned in previous presentations, the solution of the approximation problem for recursive filters can be accomplished by using *direct* or *indirect* methods.
- In indirect approximation methods, digital filters are designed indirectly through the use of corresponding analog-filter approximations.
- Several analog-filter approximations have been proposed in the past, as follows:
 - Butterworth,
 - Chebyshev,
 - Inverse-Chebyshev,
 - elliptic, and
 - Bessel-Thomson approximations.

Introduction

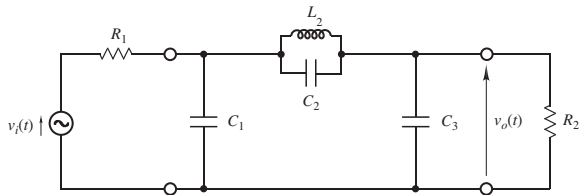
- As mentioned in previous presentations, the solution of the approximation problem for recursive filters can be accomplished by using *direct* or *indirect* methods.
- In indirect approximation methods, digital filters are designed indirectly through the use of corresponding analog-filter approximations.
- Several analog-filter approximations have been proposed in the past, as follows:
 - Butterworth,
 - Chebyshev,
 - Inverse-Chebyshev,
 - elliptic, and
 - Bessel-Thomson approximations.
- This presentation deals with the basics of these approximations.

Introduction *Cont'd*

- An analog filter such as the one shown below can be represented by the equation

$$\frac{V_o(s)}{V_i(s)} = H(s) = \frac{N(s)}{D(s)}$$

where

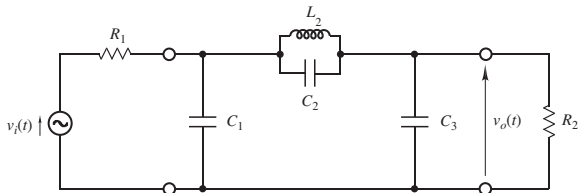


- An analog filter such as the one shown below can be represented by the equation

$$\frac{V_o(s)}{V_i(s)} = H(s) = \frac{N(s)}{D(s)}$$

where

- $V_i(s)$ is the Laplace transform of the input voltage $v_i(t)$,

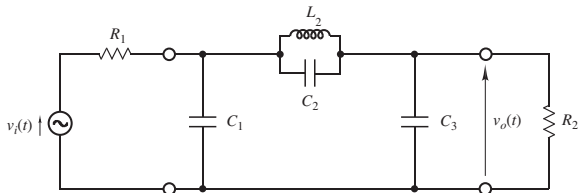


- An analog filter such as the one shown below can be represented by the equation

$$\frac{V_o(s)}{V_i(s)} = H(s) = \frac{N(s)}{D(s)}$$

where

- $V_i(s)$ is the Laplace transform of the input voltage $v_i(t)$,
- $V_o(s)$ is the Laplace transform of the output voltage $v_o(t)$,

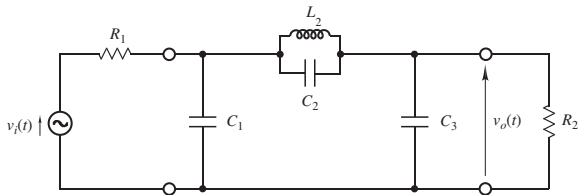


- An analog filter such as the one shown below can be represented by the equation

$$\frac{V_o(s)}{V_i(s)} = H(s) = \frac{N(s)}{D(s)}$$

where

- $V_i(s)$ is the Laplace transform of the input voltage $v_i(t)$,
- $V_o(s)$ is the Laplace transform of the output voltage $v_o(t)$,
- $H(s)$ is the transfer function,

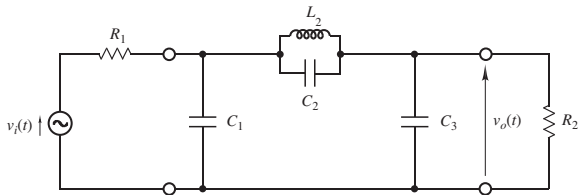


- An analog filter such as the one shown below can be represented by the equation

$$\frac{V_o(s)}{V_i(s)} = H(s) = \frac{N(s)}{D(s)}$$

where

- $V_i(s)$ is the Laplace transform of the input voltage $v_i(t)$,
- $V_o(s)$ is the Laplace transform of the output voltage $v_o(t)$,
- $H(s)$ is the transfer function,
- $N(s)$ and $D(s)$ are polynomials in complex variable s .



- The loss (or attenuation) is defined as

$$L(\omega^2) = \frac{|V_i(j\omega)|^2}{|V_o(j\omega)|^2} = \left| \frac{V_i(j\omega)}{V_o(j\omega)} \right|^2 = \frac{1}{|H(j\omega)|^2} = 10 \log \frac{1}{H(j\omega)H(-j\omega)}$$

Hence the loss in dB is given by

$$\begin{aligned} A(\omega) &= 10 \log L(\omega^2) = 10 \log \frac{1}{|H(j\omega)|^2} \\ &= -20 \log |H(j\omega)| \end{aligned}$$

In effect, the loss in dB is the negative of the gain in dB.

- The loss (or attenuation) is defined as

$$L(\omega^2) = \frac{|V_i(j\omega)|^2}{|V_o(j\omega)|^2} = \left| \frac{V_i(j\omega)}{V_o(j\omega)} \right|^2 = \frac{1}{|H(j\omega)|^2} = 10 \log \frac{1}{H(j\omega)H(-j\omega)}$$

Hence the loss in dB is given by

$$\begin{aligned} A(\omega) &= 10 \log L(\omega^2) = 10 \log \frac{1}{|H(j\omega)|^2} \\ &= -20 \log |H(j\omega)| \end{aligned}$$

In effect, the loss in dB is the negative of the gain in dB.

- As a function of ω , $A(\omega)$ is said to be the *loss characteristic*.

- The phase shift and group delay of analog filters are defined just as in digital filters, namely, the phase shift is the phase angle of the frequency response and the group delay is the negative of the derivative of the phase angle with respect to ω , i.e.,

$$\theta(\omega) = \arg H(j\omega) \quad \text{and} \quad \tau(\omega) = -\frac{d\theta(\omega)}{d\omega}$$

- The phase shift and group delay of analog filters are defined just as in digital filters, namely, the phase shift is the phase angle of the frequency response and the group delay is the negative of the derivative of the phase angle with respect to ω , i.e.,

$$\theta(\omega) = \arg H(j\omega) \quad \text{and} \quad \tau(\omega) = -\frac{d\theta(\omega)}{d\omega}$$

- As functions of ω , $\theta(\omega)$ and $\tau(\omega)$ are the *phase response* and *delay characteristic*, respectively.

- As was shown earlier, the loss can be expressed as

$$L(\omega^2) = \frac{1}{H(j\omega)H(-j\omega)}$$

- As was shown earlier, the loss can be expressed as

$$L(\omega^2) = \frac{1}{H(j\omega)H(-j\omega)}$$

- If we replace ω by s/j in $L(\omega^2)$, we get the so-called *loss function*

$$L(-s^2) = \frac{D(s)D(-s)}{N(s)N(-s)}$$

- As was shown earlier, the loss can be expressed as

$$L(\omega^2) = \frac{1}{H(j\omega)H(-j\omega)}$$

- If we replace ω by s/j in $L(\omega^2)$, we get the so-called *loss function*

$$L(-s^2) = \frac{D(s)D(-s)}{N(s)N(-s)}$$

- Thus if the transfer function of an analog filter is known, its loss function can be readily deduced.

- If

$$H(s) = \frac{N(s)}{D(s)} = \frac{\prod_{i=1}^M (s - z_i)}{\prod_{i=1}^N (s - p_i)}$$

then

$$\begin{aligned} L(-s^2) &= \frac{D(s)D(-s)}{N(s)N(-s)} = \frac{\prod_{i=1}^N (s - p_i) \prod_{i=1}^N (-s - p_i)}{\prod_{i=1}^M (s - z_i) \prod_{i=1}^M (-s - z_i)} \\ &= (-1)^{N-M} \frac{\prod_{i=1}^N (s - p_i) \prod_{i=1}^N [s - (-p_i)]}{\prod_{i=1}^M (s - z_i) \prod_{i=1}^M [s - (-z_i)]} \end{aligned}$$

- If

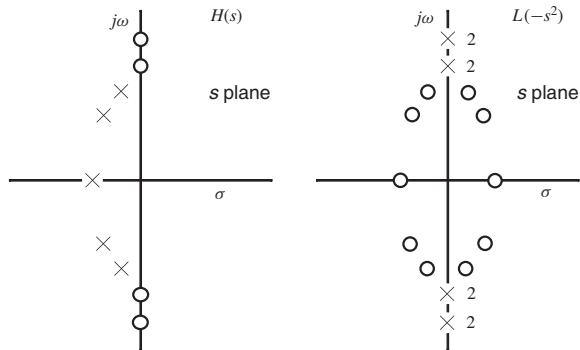
$$H(s) = \frac{N(s)}{D(s)} = \frac{\prod_{i=1}^M (s - z_i)}{\prod_{i=1}^N (s - p_i)}$$

then

$$\begin{aligned} L(-s^2) &= \frac{D(s)D(-s)}{N(s)N(-s)} = \frac{\prod_{i=1}^N (s - p_i) \prod_{i=1}^N (-s - p_i)}{\prod_{i=1}^M (s - z_i) \prod_{i=1}^M (-s - z_i)} \\ &= (-1)^{N-M} \frac{\prod_{i=1}^N (s - p_i) \prod_{i=1}^N [s - (-p_i)]}{\prod_{i=1}^M (s - z_i) \prod_{i=1}^M [s - (-z_i)]} \end{aligned}$$

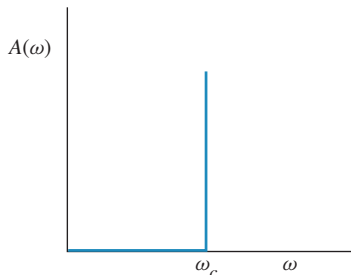
- Therefore,
 - the zeros of the loss function are the poles of the transfer function and their negatives, and
 - the poles of the loss function are the zeros of the transfer function and their negatives.

- Zero-pole plots for transfer function and loss function:

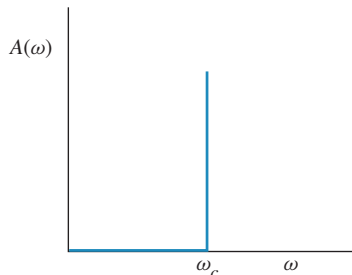


Introduction *Cont'd*

- An *ideal lowpass* filter is one that will pass only low-frequency components. Its loss characteristic assumes the form shown in the figure.



- An *ideal lowpass* filter is one that will pass only low-frequency components. Its loss characteristic assumes the form shown in the figure.
 - The frequency range 0 to ω_c is the *passband*.
 - The frequency range ω_c to ∞ is the *stopband*.
 - The boundary between the passband and stopband, namely, ω_c , is the *cutoff frequency*.



- As in digital filters, the approximation step for the design of analog filters is the process of obtaining a realizable transfer function that would satisfy certain desirable specifications.

- As in digital filters, the approximation step for the design of analog filters is the process of obtaining a realizable transfer function that would satisfy certain desirable specifications.
- In the classical solutions of the approximation problem, an ideal *normalized* lowpass loss characteristic is assumed with a cutoff frequency of order unity, i.e., $\omega_c \approx 1$.

- As in digital filters, the approximation step for the design of analog filters is the process of obtaining a realizable transfer function that would satisfy certain desirable specifications.
- In the classical solutions of the approximation problem, an ideal *normalized* lowpass loss characteristic is assumed with a cutoff frequency of order unity, i.e., $\omega_c \approx 1$.
- A set of formulas are then derived that yield the *zeros and poles* or *coefficients* of the transfer function for a specified filter order.

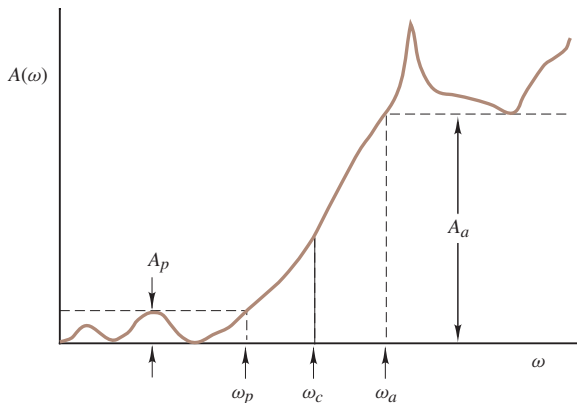
- Classical approximations such as the Butterworth, Chebyshev, inverse-Chebyshev, and elliptic approximations lead to a loss characteristic where

- Classical approximations such as the Butterworth, Chebyshev, inverse-Chebyshev, and elliptic approximations lead to a loss characteristic where
 - the loss is equal to or less than A_p dB over the frequency range 0 to ω_p ;

- Classical approximations such as the Butterworth, Chebyshev, inverse-Chebyshev, and elliptic approximations lead to a loss characteristic where
 - the loss is equal to or less than A_p dB over the frequency range 0 to ω_p ;
 - the loss is equal to or greater than A_a dB over the frequency range ω_a to ∞ .

- Classical approximations such as the Butterworth, Chebyshev, inverse-Chebyshev, and elliptic approximations lead to a loss characteristic where
 - the loss is equal to or less than A_p dB over the frequency range 0 to ω_p ;
 - the loss is equal to or greater than A_a dB over the frequency range ω_a to ∞ .
- Parameters ω_p and ω_a are the *passband* and *stopband* edges, A_p is the *maximum passband loss* (or *attenuation*), and A_a is the *minimum stopband loss* (or *attenuation*), respectively.

- The quality of an approximation depends on the values of A_p and A_a for a given filter order, i.e., a lower A_p and a larger A_a correspond to a better filter.



- In practice, the cutoff frequency of the lowpass filter depends on the application at hand.

- In practice, the cutoff frequency of the lowpass filter depends on the application at hand.

Furthermore, other types of filters are often required such as *highpass*, *bandpass*, and *bandstop* filters.

- In practice, the cutoff frequency of the lowpass filter depends on the application at hand.

Furthermore, other types of filters are often required such as *highpass*, *bandpass*, and *bandstop* filters.

- Approximations for arbitrary lowpass, highpass, bandpass, and bandstop filters can be obtained through a process known as *denormalization*.

- In practice, the cutoff frequency of the lowpass filter depends on the application at hand.

Furthermore, other types of filters are often required such as *highpass*, *bandpass*, and *bandstop* filters.

- Approximations for arbitrary lowpass, highpass, bandpass, and bandstop filters can be obtained through a process known as *denormalization*.
- Filter denormalization can be applied through the use of a class of analog-filter transformations.

- In practice, the cutoff frequency of the lowpass filter depends on the application at hand.

Furthermore, other types of filters are often required such as *highpass*, *bandpass*, and *bandstop* filters.

- Approximations for arbitrary lowpass, highpass, bandpass, and bandstop filters can be obtained through a process known as *denormalization*.
- Filter denormalization can be applied through the use of a class of analog-filter transformations.
- These transformations will be discussed in the next presentation.

Realizability Constraints

- *Realizability constraints* are constraints that must be satisfied by a transfer function in order to be realizable in terms of an analog-filter network.

Realizability Constraints

- *Realizability constraints* are constraints that must be satisfied by a transfer function in order to be realizable in terms of an analog-filter network.
- The coefficients must be real.

Realizability Constraints

- *Realizability constraints* are constraints that must be satisfied by a transfer function in order to be realizable in terms of an analog-filter network.
- The coefficients must be real.

This requirement is imposed by the fact that inductances, capacitances, and resistances are required to be real quantities.

Realizability Constraints

- *Realizability constraints* are constraints that must be satisfied by a transfer function in order to be realizable in terms of an analog-filter network.
- The coefficients must be real.

This requirement is imposed by the fact that inductances, capacitances, and resistances are required to be real quantities.

- The degree of the numerator polynomial must be equal to or less than the degree of the denominator polynomial.

Realizability Constraints

- *Realizability constraints* are constraints that must be satisfied by a transfer function in order to be realizable in terms of an analog-filter network.
- The coefficients must be real.

This requirement is imposed by the fact that inductances, capacitances, and resistances are required to be real quantities.

- The degree of the numerator polynomial must be equal to or less than the degree of the denominator polynomial.

Otherwise, the transfer function would represent a noncausal system which would not be realizable as a real-time analog filter.

Realizability Constraints

- *Realizability constraints* are constraints that must be satisfied by a transfer function in order to be realizable in terms of an analog-filter network.
- The coefficients must be real.

This requirement is imposed by the fact that inductances, capacitances, and resistances are required to be real quantities.

- The degree of the numerator polynomial must be equal to or less than the degree of the denominator polynomial.

Otherwise, the transfer function would represent a noncausal system which would not be realizable as a real-time analog filter.

- The poles must be in the left half s plane.

Realizability Constraints

- *Realizability constraints* are constraints that must be satisfied by a transfer function in order to be realizable in terms of an analog-filter network.
- The coefficients must be real.

This requirement is imposed by the fact that inductances, capacitances, and resistances are required to be real quantities.

- The degree of the numerator polynomial must be equal to or less than the degree of the denominator polynomial.

Otherwise, the transfer function would represent a noncausal system which would not be realizable as a real-time analog filter.

- The poles must be in the left half s plane.

Otherwise, the transfer function would represent an unstable system.

Classical Analog-Filter Approximations

- In the slides that follow, the basic features of the various classical analog-filter approximations will be presented such as:

Classical Analog-Filter Approximations

- In the slides that follow, the basic features of the various classical analog-filter approximations will be presented such as:
 - The underlying assumptions in the derivation.

Classical Analog-Filter Approximations

- In the slides that follow, the basic features of the various classical analog-filter approximations will be presented such as:
 - The underlying assumptions in the derivation.
 - Typical loss characteristics.

Classical Analog-Filter Approximations

- In the slides that follow, the basic features of the various classical analog-filter approximations will be presented such as:
 - The underlying assumptions in the derivation.
 - Typical loss characteristics.
 - Available independent parameters.

Classical Analog-Filter Approximations

- In the slides that follow, the basic features of the various classical analog-filter approximations will be presented such as:
 - The underlying assumptions in the derivation.
 - Typical loss characteristics.
 - Available independent parameters.
 - Formula for the loss as a function of the independent parameters.

Classical Analog-Filter Approximations

- In the slides that follow, the basic features of the various classical analog-filter approximations will be presented such as:
 - The underlying assumptions in the derivation.
 - Typical loss characteristics.
 - Available independent parameters.
 - Formula for the loss as a function of the independent parameters.
 - Minimum filter order to achieve prescribed specifications.

Classical Analog-Filter Approximations

- In the slides that follow, the basic features of the various classical analog-filter approximations will be presented such as:
 - The underlying assumptions in the derivation.
 - Typical loss characteristics.
 - Available independent parameters.
 - Formula for the loss as a function of the independent parameters.
 - Minimum filter order to achieve prescribed specifications.
 - Formulas for the parameters of the transfer function (e.g., zeros, poles, coefficients, multiplier constant).

Butterworth Approximation

- The *Butterworth approximation* is derived on the assumption that the loss function $L(-s^2)$ is a polynomial. Since

$$\lim_{s \rightarrow \infty} L(-s^2) = \lim_{\omega \rightarrow \infty} L(\omega^2) = a_0 + a_2\omega^2 + \dots + a_{2n}\omega^{2n} \rightarrow \infty$$

in such a case, a lowpass approximation is obtained.

Butterworth Approximation

- The *Butterworth approximation* is derived on the assumption that the loss function $L(-s^2)$ is a polynomial. Since

$$\lim_{s \rightarrow \infty} L(-s^2) = \lim_{\omega \rightarrow \infty} L(\omega^2) = a_0 + a_2\omega^2 + \dots + a_{2n}\omega^{2n} \rightarrow \infty$$

in such a case, a lowpass approximation is obtained.

- For an n -order approximation, $L(\omega^2)$ is assumed to be *maximally flat* at zero frequency.

Butterworth Approximation

- The *Butterworth approximation* is derived on the assumption that the loss function $L(-s^2)$ is a polynomial. Since

$$\lim_{s \rightarrow \infty} L(-s^2) = \lim_{\omega \rightarrow \infty} L(\omega^2) = a_0 + a_2\omega^2 + \dots + a_{2n}\omega^{2n} \rightarrow \infty$$

in such a case, a lowpass approximation is obtained.

- For an n -order approximation, $L(\omega^2)$ is assumed to be *maximally flat* at zero frequency.

This is achieved by letting

$$L(0) = 1, \quad \left. \frac{d^k L(x)}{dx^k} \right|_{x=0} = 0 \quad \text{for } k \leq n-1$$

where $x = \omega^2$, i.e., n derivatives of the loss are set to zero at zero frequency.

Butterworth Approximation

- The *Butterworth approximation* is derived on the assumption that the loss function $L(-s^2)$ is a polynomial. Since

$$\lim_{s \rightarrow \infty} L(-s^2) = \lim_{\omega \rightarrow \infty} L(\omega^2) = a_0 + a_2\omega^2 + \dots + a_{2n}\omega^{2n} \rightarrow \infty$$

in such a case, a lowpass approximation is obtained.

- For an n -order approximation, $L(\omega^2)$ is assumed to be *maximally flat* at zero frequency.

This is achieved by letting

$$L(0) = 1, \quad \left. \frac{d^k L(x)}{dx^k} \right|_{x=0} = 0 \quad \text{for } k \leq n-1$$

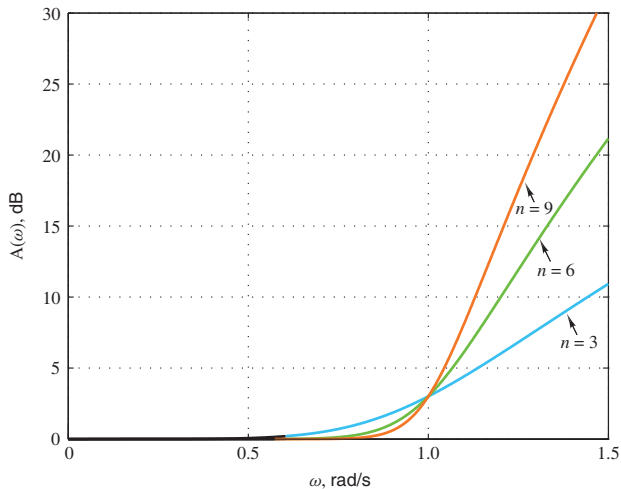
where $x = \omega^2$, i.e., n derivatives of the loss are set to zero at zero frequency.

- Assuming that $L(1) = 2$, the loss function in dB can be expressed as

$$L(\omega^2) = 1 + \omega^{2n} \quad \text{and} \quad A(\omega) = 10 \log(1 + \omega^{2n})$$

Butterworth Approximation *Cont'd*

- Typical loss characteristics:



Butterworth Approximation *Cont'd*

- The loss function for the *normalized* Butterworth approximation (3-dB frequency at 1 rad/s) is given by

$$L(-s^2) = 1 + (-s^2)^n = \prod_{i=1}^{2n} (s - z_i)$$

where

$$z_i = \begin{cases} e^{j(2i-1)\pi/2n} & \text{for even } n \\ e^{j(i-1)\pi/n} & \text{for odd } n \end{cases}$$

Butterworth Approximation *Cont'd*

- The loss function for the *normalized* Butterworth approximation (3-dB frequency at 1 rad/s) is given by

$$L(-s^2) = 1 + (-s^2)^n = \prod_{i=1}^{2n} (s - z_i)$$

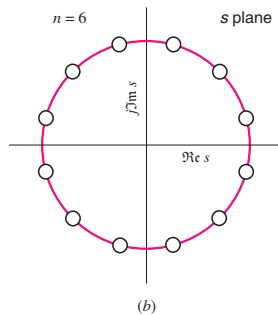
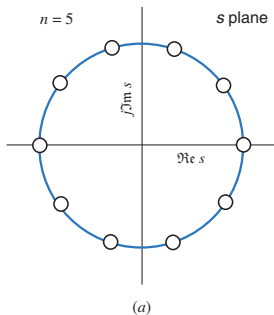
where

$$z_i = \begin{cases} e^{j(2i-1)\pi/2n} & \text{for even } n \\ e^{j(i-1)\pi/n} & \text{for odd } n \end{cases}$$

- Since $|z_k| = 1$, the zeros of $L(-s^2)$ are located on the *unit circle* $|s| = 1$.

Butterworth Approximation *Cont'd*

- Zero-pole plots for loss function:



Butterworth Approximation *Cont'd*

- The zeros of the loss function are the poles of the transfer function and their negatives.

Butterworth Approximation *Cont'd*

- The zeros of the loss function are the poles of the transfer function and their negatives.
- For stability, the poles of the transfer function must be located in the left-half s plane.

Butterworth Approximation *Cont'd*

- The zeros of the loss function are the poles of the transfer function and their negatives.
- For stability, the poles of the transfer function must be located in the left-half s plane.

Therefore, they are identical with the zeros of the loss function located in the left-half s plane.

Butterworth Approximation *Cont'd*

- Typically in practice, the required filter order is unknown.

Butterworth Approximation *Cont'd*

- Typically in practice, the required filter order is unknown.

For Butterworth, Chebyshev, inverse-Chebyshev, and elliptic filters, it can be easily deduced if the required specifications are known.

Butterworth Approximation *Cont'd*

- Typically in practice, the required filter order is unknown.

For Butterworth, Chebyshev, inverse-Chebyshev, and elliptic filters, it can be easily deduced if the required specifications are known.

- Let us assume that we need a normalized Butterworth filter with a maximum passband loss A_p , minimum stopband loss A_a , passband edge ω_p , and stopband edge ω_a .

Butterworth Approximation *Cont'd*

- Typically in practice, the required filter order is unknown.

For Butterworth, Chebyshev, inverse-Chebyshev, and elliptic filters, it can be easily deduced if the required specifications are known.

- Let us assume that we need a normalized Butterworth filter with a maximum passband loss A_p , minimum stopband loss A_a , passband edge ω_p , and stopband edge ω_a .

The *minimum* filter order that will satisfy the required specifications must be large enough to satisfy *both* of the following inequalities:

$$n \geq \frac{[-\log(10^{0.1A_p} - 1)]}{(-2 \log \omega_p)} \quad \text{and} \quad n \geq \frac{\log(10^{0.1A_a} - 1)}{2 \log \omega_a}$$

Butterworth Approximation *Cont'd*

- Typically in practice, the required filter order is unknown.

For Butterworth, Chebyshev, inverse-Chebyshev, and elliptic filters, it can be easily deduced if the required specifications are known.

- Let us assume that we need a normalized Butterworth filter with a maximum passband loss A_p , minimum stopband loss A_a , passband edge ω_p , and stopband edge ω_a .

The *minimum* filter order that will satisfy the required specifications must be large enough to satisfy *both* of the following inequalities:

$$n \geq \frac{[-\log(10^{0.1A_p} - 1)]}{(-2 \log \omega_p)} \quad \text{and} \quad n \geq \frac{\log(10^{0.1A_a} - 1)}{2 \log \omega_a}$$

(See textbook for derivations and examples.)

Butterworth Approximation *Cont'd*

• • •

$$n \geq \frac{[-\log(10^{0.1A_p} - 1)]}{(-2 \log \omega_p)} \quad \text{and} \quad n \geq \frac{\log(10^{0.1A_a} - 1)}{2 \log \omega_a}$$

- The right-hand sides in the above inequalities will normally yield a mixed number but since the filter order *must* be an integer, the value obtained must be *rounded up* to the next integer.

Butterworth Approximation *Cont'd*

• • •

$$n \geq \frac{[-\log(10^{0.1A_p} - 1)]}{(-2 \log \omega_p)} \quad \text{and} \quad n \geq \frac{\log(10^{0.1A_s} - 1)}{2 \log \omega_a}$$

- The right-hand sides in the above inequalities will normally yield a mixed number but since the filter order *must* be an integer, the value obtained must be *rounded up* to the next integer.

As a result, the required specifications will usually be slightly oversatisfied.

Butterworth Approximation *Cont'd*

• • •

$$n \geq \frac{[-\log(10^{0.1A_p} - 1)]}{(-2 \log \omega_p)} \quad \text{and} \quad n \geq \frac{\log(10^{0.1A_a} - 1)}{2 \log \omega_a}$$

- The right-hand sides in the above inequalities will normally yield a mixed number but since the filter order *must* be an integer, the value obtained must be *rounded up* to the next integer.

As a result, the required specifications will usually be slightly oversatisfied.

- Once the required filter order is determined, the actual maximum passband loss and minimum stopband loss can be calculated as

$$A_p = A(\omega_p) = 10 \log(1 + \omega_p^{2n}) \quad \text{and} \quad A_a = A(\omega_a) = 10 \log(1 + \omega_a^{2n})$$

respectively.

Chebyshev Approximation

- In the Butterworth approximation, the loss is an increasing monotonic function of ω , and as a result the passband loss is very small at low frequencies and very large at frequencies close to the bandpass edge.

Chebyshev Approximation

- In the Butterworth approximation, the loss is an increasing monotonic function of ω , and as a result the passband loss is very small at low frequencies and very large at frequencies close to the bandpass edge.

On the other hand, the stopband loss is very small at frequencies close to the stopband edge and very large at very high frequencies.

Chebyshev Approximation

- In the Butterworth approximation, the loss is an increasing monotonic function of ω , and as a result the passband loss is very small at low frequencies and very large at frequencies close to the bandpass edge.

On the other hand, the stopband loss is very small at frequencies close to the stopband edge and very large at very high frequencies.

- A more balanced characteristic with respect to the passband can be achieved by employing the *Chebyshev* approximation.

Chebyshev Approximation *Cont'd*

- As in the Butterworth approximation, the loss function in the Chebyshev approximation is assumed to be a polynomial in s , which would assure a lowpass characteristic.

Chebyshev Approximation *Cont'd*

- As in the Butterworth approximation, the loss function in the Chebyshev approximation is assumed to be a polynomial in s , which would assure a lowpass characteristic.
- The derivation of the Chebyshev approximation is based on the assumption that the passband loss oscillates between zero and a specified maximum loss A_p .

Chebyshev Approximation *Cont'd*

- As in the Butterworth approximation, the loss function in the Chebyshev approximation is assumed to be a polynomial in s , which would assure a lowpass characteristic.
- The derivation of the Chebyshev approximation is based on the assumption that the passband loss oscillates between zero and a specified maximum loss A_p .

On the basis of this assumption, a differential equation is constructed whose solution gives the zeros of the loss function.

Chebyshev Approximation *Cont'd*

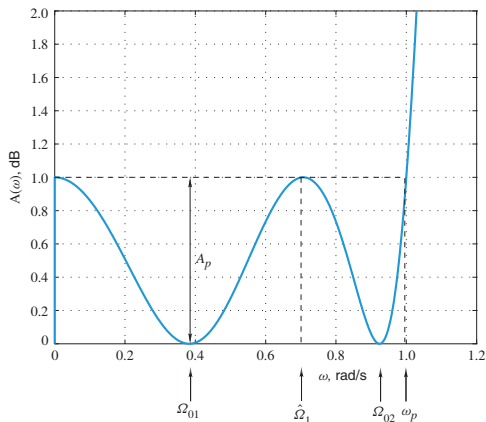
- As in the Butterworth approximation, the loss function in the Chebyshev approximation is assumed to be a polynomial in s , which would assure a lowpass characteristic.
- The derivation of the Chebyshev approximation is based on the assumption that the passband loss oscillates between zero and a specified maximum loss A_p .

On the basis of this assumption, a differential equation is constructed whose solution gives the zeros of the loss function.

- Then by neglecting the zeros of the loss function in the right-half s plane, the poles of the transfer function can be obtained.

Chebyshev Approximation *Cont'd*

- In the case of a fourth-order Chebyshev filter the passband loss is assumed to be zero at $\omega = \Omega_{01}, \Omega_{02}$ and equal to A_p at $\omega = 0, \hat{\Omega}_1, 1$ as shown in the figure:



Chebyshev Approximation *Cont'd*

- On using all the information that can be extracted from the figure shown, a differential equation of the form

$$\left[\frac{dF(\omega)}{d\omega} \right]^2 = \frac{M_4[1 - F^2(\omega)]}{1 - \omega^2}$$

can be constructed.

- On using all the information that can be extracted from the figure shown, a differential equation of the form

$$\left[\frac{dF(\omega)}{d\omega} \right]^2 = \frac{M_4[1 - F^2(\omega)]}{1 - \omega^2}$$

can be constructed.

- The solution of this differential equation gives the loss as

$$L(\omega^2) = 1 + \varepsilon^2 F^2(\omega)$$

where

$$\varepsilon^2 = 10^{0.1A_p} - 1$$

and

$$F(\omega) = T_4(\omega) = \cos(4 \cos^{-1} \omega)$$

- On using all the information that can be extracted from the figure shown, a differential equation of the form

$$\left[\frac{dF(\omega)}{d\omega} \right]^2 = \frac{M_4[1 - F^2(\omega)]}{1 - \omega^2}$$

can be constructed.

- The solution of this differential equation gives the loss as

$$L(\omega^2) = 1 + \varepsilon^2 F^2(\omega)$$

where

$$\varepsilon^2 = 10^{0.1A_p} - 1$$

and

$$F(\omega) = T_4(\omega) = \cos(4 \cos^{-1} \omega)$$

- The function $\cos(4 \cos^{-1} \omega)$ is actually a polynomial known as the *4th-order Chebyshev* polynomial.

- Similarly, for an n th-order Chebyshev approximation, one can show that

$$A(\omega) = 10 \log L(\omega^2) = 10 \log[1 + \varepsilon^2 T_n^2(\omega)]$$

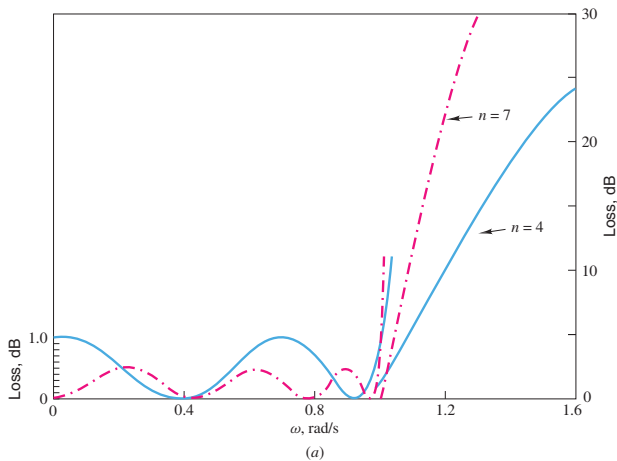
where $\varepsilon^2 = 10^{0.1A_p} - 1$

and
$$T_n(\omega) = \begin{cases} \cos(n \cos^{-1} \omega) & \text{for } |\omega| \leq 1 \\ \cosh(n \cosh^{-1} \omega) & \text{for } |\omega| > 1 \end{cases}$$

is the *n th-order* Chebyshev polynomial.

Chebyshev Approximation *Cont'd*

- Typical loss characteristics for Chebyshev approximation:



Chebyshev Approximation *Cont'd*

- The zeros of the loss function for a *normalized* n th-order Chebyshev approximation ($\omega_p = 1$ rad/s) are given by $s_i = \sigma_i + j\omega_i$ where

$$\sigma_i = \pm \sinh \left(\frac{1}{n} \sinh^{-1} \frac{1}{\varepsilon} \right) \sin \frac{(2i-1)\pi}{2n}$$

$$\omega_i = \cosh \left(\frac{1}{n} \sinh^{-1} \frac{1}{\varepsilon} \right) \cos \frac{(2i-1)\pi}{2n}$$

for $i = 1, 2, \dots, n$.

Chebyshev Approximation *Cont'd*

- The zeros of the loss function for a *normalized* n th-order Chebyshev approximation ($\omega_p = 1$ rad/s) are given by $s_i = \sigma_i + j\omega_i$ where

$$\sigma_i = \pm \sinh \left(\frac{1}{n} \sinh^{-1} \frac{1}{\varepsilon} \right) \sin \frac{(2i-1)\pi}{2n}$$
$$\omega_i = \cosh \left(\frac{1}{n} \sinh^{-1} \frac{1}{\varepsilon} \right) \cos \frac{(2i-1)\pi}{2n}$$

for $i = 1, 2, \dots, n$.

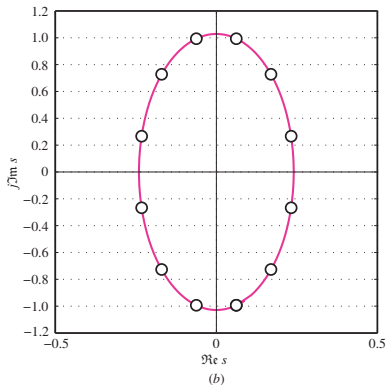
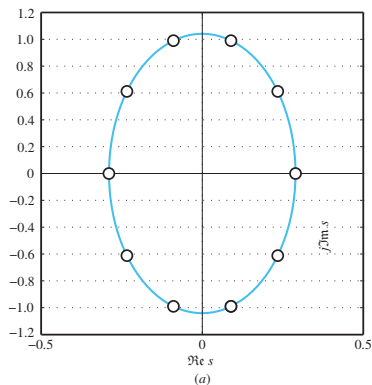
- From these equations, we note that

$$\frac{\sigma_i^2}{\sinh^2 u} + \frac{\omega_i^2}{\cosh^2 u} = 1 \quad \text{where } u = \frac{1}{n} \sinh^{-1} \frac{1}{\varepsilon}$$

i.e., the zeros of $L(-s^2)$ are located on an *ellipse*.

Chebyshev Approximation *Cont'd*

- Typical zero-pole plots for Chebyshev approximation:
(a) $n = 5$ $A_p = 1$ dB; (b) $n = 6$ $A_p = 1$ dB.



Chebyshev Approximation *Cont'd*

- An n th-order normalized Chebyshev transfer function with a passband edge $\omega_p = 1$ rad/s and a maximum passband loss of A_p dB can be determined as follows:

$$\begin{aligned} H_N(s) &= \frac{H_0}{D_0(s) \prod_i^r (s - p_i)(s - p_i^*)} \\ &= \frac{H_0}{D_0(s) \prod_i^r [s^2 - 2\operatorname{Re}(p_i)s + |p_i|^2]} \end{aligned}$$

where

$$r = \begin{cases} \frac{n-1}{2} & \text{for odd } n \\ \frac{n}{2} & \text{for even } n \end{cases} \quad \text{and} \quad D_0(s) = \begin{cases} s - p_0 & \text{for odd } n \\ 1 & \text{for even } n \end{cases}$$

- The poles and multiplier constant, H_0 , can be calculated by using the following formulas in sequence:

$$\varepsilon = \sqrt{10^{0.1A_p} - 1}$$

$$p_0 = \sigma_{(n+1)/2} \quad \text{with} \quad \sigma_{(n+1)/2} = -\sinh\left(\frac{1}{n} \sinh^{-1} \frac{1}{\varepsilon}\right)$$

$$p_i = \sigma_i + j\omega_i \quad \text{for} \quad i = 1, 2, \dots, r$$

$$\text{where} \quad \sigma_i = -\sinh\left(\frac{1}{n} \sinh^{-1} \frac{1}{\varepsilon}\right) \sin \frac{(2i-1)\pi}{2n}$$

$$\omega_i = \cosh\left(\frac{1}{n} \sinh^{-1} \frac{1}{\varepsilon}\right) \cos \frac{(2i-1)\pi}{2n}$$

$$H_0 = \begin{cases} -p_0 \prod_{i=1}^r |p_i|^2 & \text{for odd } n \\ 10^{-0.05A_p} \prod_{i=1}^r |p_i|^2 & \text{for even } n \end{cases}$$

Chebyshev Approximation *Cont'd*

- The minimum filter order required to achieve a maximum passband loss of A_p and a minimum stopband loss of A_a must be large enough to satisfy the inequality

$$n \geq \frac{\cosh^{-1} \sqrt{D}}{\cosh^{-1} \omega_a} \quad \text{where} \quad D = \frac{10^{0.1A_a} - 1}{10^{0.1A_p} - 1}$$

Chebyshev Approximation *Cont'd*

- The minimum filter order required to achieve a maximum passband loss of A_p and a minimum stopband loss of A_a must be large enough to satisfy the inequality

$$n \geq \frac{\cosh^{-1} \sqrt{D}}{\cosh^{-1} \omega_a} \quad \text{where} \quad D = \frac{10^{0.1A_a} - 1}{10^{0.1A_p} - 1}$$

- As in the Butterworth approximation, the value at the right-hand side of the inequality must be rounded up to the next integer. As a result, the minimum stopband loss will usually be slightly oversatisfied.

Chebyshev Approximation *Cont'd*

- The minimum filter order required to achieve a maximum passband loss of A_p and a minimum stopband loss of A_a must be large enough to satisfy the inequality

$$n \geq \frac{\cosh^{-1} \sqrt{D}}{\cosh^{-1} \omega_a} \quad \text{where} \quad D = \frac{10^{0.1A_a} - 1}{10^{0.1A_p} - 1}$$

- As in the Butterworth approximation, the value at the right-hand side of the inequality must be rounded up to the next integer. As a result, the minimum stopband loss will usually be slightly oversatisfied.

The actual minimum stopband loss can be calculated as

$$A_a = A(\omega_a) = 10 \log L(\omega_a^2) = 10 \log[1 + \varepsilon^2 T_n^2(\omega_a)]$$

Chebyshev Approximation *Cont'd*

- The minimum filter order required to achieve a maximum passband loss of A_p and a minimum stopband loss of A_a must be large enough to satisfy the inequality

$$n \geq \frac{\cosh^{-1} \sqrt{D}}{\cosh^{-1} \omega_a} \quad \text{where} \quad D = \frac{10^{0.1A_a} - 1}{10^{0.1A_p} - 1}$$

- As in the Butterworth approximation, the value at the right-hand side of the inequality must be rounded up to the next integer. As a result, the minimum stopband loss will usually be slightly oversatisfied.

The actual minimum stopband loss can be calculated as

$$A_a = A(\omega_a) = 10 \log L(\omega_a^2) = 10 \log[1 + \varepsilon^2 T_n^2(\omega_a)]$$

- In the Chebyshev approximation, the actual maximum passband loss will be exactly as specified, i.e., A_p .

Inverse-Chebyshev Approximation

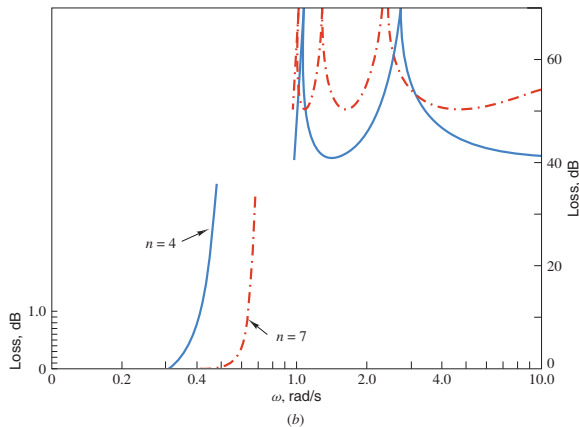
- The *inverse-Chebyshev* approximation is closely related to the Chebyshev approximation, as may be expected, and it is actually derived from the Chebyshev approximation.

Inverse-Chebyshev Approximation

- The *inverse-Chebyshev* approximation is closely related to the Chebyshev approximation, as may be expected, and it is actually derived from the Chebyshev approximation.
- The passband loss in the inverse-Chebyshev is very similar to that of the Butterworth approximation, i.e., it is an increasing monotonic function of ω , while the stopband loss oscillates between infinity and a prescribed minimum loss A_a .

Inverse-Chebyshev Approximation *Cont'd*

- Typical loss characteristics for inverse-Chebyshev approximation:



- The loss for the inverse-Chebyshev approximation is given by

$$A(\omega) = 10 \log \left[1 + \frac{1}{\delta^2 T_n^2(1/\omega)} \right]$$

where

$$\delta^2 = \frac{1}{10^{0.1A_a} - 1}$$

and the stopband extends from $\omega = 1$ to ∞ .

Inverse-Chebyshev Approximation *Cont'd*

- The *normalized* transfer function for a specified order, n , stopband edge of $\omega_a = 1$ rad/s, and minimum stopband loss, A_a , is given by

$$\begin{aligned} H_N(s) &= \frac{H_0}{D_0(s)} \prod_{i=1}^r \frac{(s - 1/z_i)(s - 1/z_i^*)}{(s - 1/p_i)(s - 1/p_i^*)} \\ &= \frac{H_0}{D_0(s)} \prod_{i=1}^r \frac{s^2 + \frac{1}{|z_i|^2}}{s^2 - 2\operatorname{Re}\left(\frac{1}{p_i}\right)s + \frac{1}{|p_i|^2}} \end{aligned}$$

where

$$r = \begin{cases} \frac{n-1}{2} & \text{for odd } n \\ \frac{n}{2} & \text{for even } n \end{cases} \quad \text{and} \quad D_0(s) = \begin{cases} s - \frac{1}{p_0} & \text{for odd } n \\ 1 & \text{for even } n \end{cases}$$

Inverse-Chebyshev Approximation *Cont'd*

- The *normalized* transfer function for a specified order, n , stopband edge of $\omega_a = 1$ rad/s, and minimum stopband loss, A_a , is given by

$$\begin{aligned} H_N(s) &= \frac{H_0}{D_0(s)} \prod_{i=1}^r \frac{(s - 1/z_i)(s - 1/z_i^*)}{(s - 1/p_i)(s - 1/p_i^*)} \\ &= \frac{H_0}{D_0(s)} \prod_{i=1}^r \frac{s^2 + \frac{1}{|z_i|^2}}{s^2 - 2\operatorname{Re}\left(\frac{1}{p_i}\right)s + \frac{1}{|p_i|^2}} \end{aligned}$$

where

$$r = \begin{cases} \frac{n-1}{2} & \text{for odd } n \\ \frac{n}{2} & \text{for even } n \end{cases} \quad \text{and} \quad D_0(s) = \begin{cases} s - \frac{1}{p_0} & \text{for odd } n \\ 1 & \text{for even } n \end{cases}$$

- The parameters of the transfer function can be calculated by using the formulas in the next slide.

Inverse-Chebyshev Approximation *Cont'd*

$$\delta = \frac{1}{\sqrt{10^{0.1A_a} - 1}}, \quad z_i = j \cos \frac{(2i-1)\pi}{2n} \quad \text{for } 1, 2, \dots, r$$

$$p_0 = \sigma_{(n+1)/2} \quad \text{with } \sigma_{(n+1)/2} = -\sinh \left(\frac{1}{n} \sinh^{-1} \frac{1}{\delta} \right)$$

$$p_i = \sigma_i + j\omega_i \quad \text{for } 1, 2, \dots, r$$

with
$$\sigma_i = -\sinh \left(\frac{1}{n} \sinh^{-1} \frac{1}{\delta} \right) \sin \frac{(2i-1)\pi}{2n}$$

$$\omega_i = \cosh \left(\frac{1}{n} \sinh^{-1} \frac{1}{\delta} \right) \cos \frac{(2i-1)\pi}{2n}$$

and
$$H_0 = \begin{cases} \frac{1}{-\rho_0} \prod_{i=1}^r \frac{|z_i|^2}{|\rho_i|^2} & \text{for odd } n \\ \prod_{i=1}^r \frac{|z_i|^2}{|\rho_i|^2} & \text{for even } n \end{cases}$$

Inverse-Chebyshev Approximation *Cont'd*

- The minimum filter order required to achieve a maximum passband loss of A_p and a minimum stopband loss of A_s must be large enough to satisfy the inequality

$$n \geq \frac{\cosh^{-1} \sqrt{D}}{\cosh^{-1}(1/\omega_p)} \quad \text{where} \quad D = \frac{10^{0.1A_s} - 1}{10^{0.1A_p} - 1}$$

Inverse-Chebyshev Approximation *Cont'd*

- The minimum filter order required to achieve a maximum passband loss of A_p and a minimum stopband loss of A_s must be large enough to satisfy the inequality

$$n \geq \frac{\cosh^{-1} \sqrt{D}}{\cosh^{-1}(1/\omega_p)} \quad \text{where} \quad D = \frac{10^{0.1A_s} - 1}{10^{0.1A_p} - 1}$$

- The value of the right-hand side of the above inequality is rarely an integer and, therefore, it must be rounded up to the next integer. This will cause the actual maximum passband loss to be slightly oversatisfied.

Inverse-Chebyshev Approximation *Cont'd*

- The minimum filter order required to achieve a maximum passband loss of A_p and a minimum stopband loss of A_s must be large enough to satisfy the inequality

$$n \geq \frac{\cosh^{-1} \sqrt{D}}{\cosh^{-1}(1/\omega_p)} \quad \text{where} \quad D = \frac{10^{0.1A_s} - 1}{10^{0.1A_p} - 1}$$

- The value of the right-hand side of the above inequality is rarely an integer and, therefore, it must be rounded up to the next integer. This will cause the actual maximum passband loss to be slightly oversatisfied.

The actual maximum passband loss can be calculated as

$$A_p = A(\omega_p) = 10 \log \left[1 + \frac{1}{\delta^2 T_n^2(1/\omega_p)} \right] \quad \text{where} \quad \delta^2 = \frac{1}{10^{0.1A_s} - 1}$$

Inverse-Chebyshev Approximation *Cont'd*

- The minimum filter order required to achieve a maximum passband loss of A_p and a minimum stopband loss of A_s must be large enough to satisfy the inequality

$$n \geq \frac{\cosh^{-1} \sqrt{D}}{\cosh^{-1}(1/\omega_p)} \quad \text{where} \quad D = \frac{10^{0.1A_s} - 1}{10^{0.1A_p} - 1}$$

- The value of the right-hand side of the above inequality is rarely an integer and, therefore, it must be rounded up to the next integer. This will cause the actual maximum passband loss to be slightly oversatisfied.

The actual maximum passband loss can be calculated as

$$A_p = A(\omega_p) = 10 \log \left[1 + \frac{1}{\delta^2 T_n^2(1/\omega_p)} \right] \quad \text{where} \quad \delta^2 = \frac{1}{10^{0.1A_s} - 1}$$

- In this approximation, the actual minimum stopband loss will be exactly as specified, i.e., A_s .

Elliptic Approximation

- The Chebyshev approximation yields a much better *passband* and the inverse-Chebyshev approximation yields a much better *stopband* than the Butterworth approximation.

Elliptic Approximation

- The Chebyshev approximation yields a much better *passband* and the inverse-Chebyshev approximation yields a much better *stopband* than the Butterworth approximation.
- A filter with improved *passband* and *stopband* can be obtained by using the *elliptic* approximation.

Elliptic Approximation

- The Chebyshev approximation yields a much better *passband* and the inverse-Chebyshev approximation yields a much better *stopband* than the Butterworth approximation.
- A filter with improved *passband* and *stopband* can be obtained by using the *elliptic* approximation.
- The elliptic approximation is more efficient than all the other analog-filter approximations in that the transition between passband and stopband is steeper for a given approximation order.

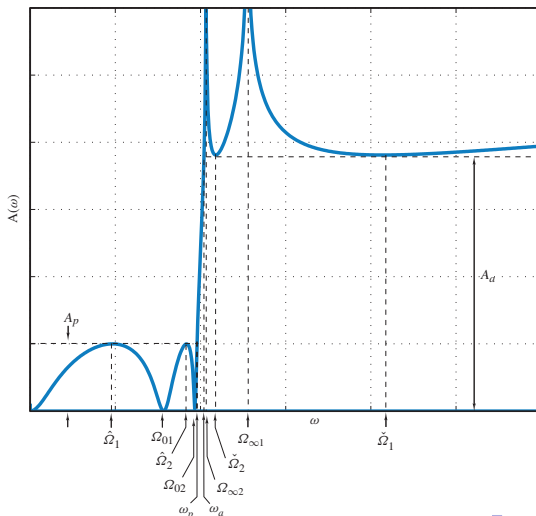
Elliptic Approximation

- The Chebyshev approximation yields a much better *passband* and the inverse-Chebyshev approximation yields a much better *stopband* than the Butterworth approximation.
- A filter with improved *passband* and *stopband* can be obtained by using the *elliptic* approximation.
- The elliptic approximation is more efficient than all the other analog-filter approximations in that the transition between passband and stopband is steeper for a given approximation order.

In fact, this is the *optimal* approximation for a given piecewise constant approximation.

Elliptic Approximation *Cont'd*

- Loss characteristic for a 5th-order elliptic approximation:



Elliptic Approximation *Cont'd*

- The passband loss is assumed to oscillate between zero and a prescribed maximum A_p and the stopband loss is assumed to oscillate between infinity and a prescribed minimum A_s .

Elliptic Approximation *Cont'd*

- The passband loss is assumed to oscillate between zero and a prescribed maximum A_p and the stopband loss is assumed to oscillate between infinity and a prescribed minimum A_s .
- On the basis of the assumed structure of the loss characteristic, a differential equation is derived, as in the case of the Chebyshev approximation.

Elliptic Approximation *Cont'd*

- The passband loss is assumed to oscillate between zero and a prescribed maximum A_p and the stopband loss is assumed to oscillate between infinity and a prescribed minimum A_s .
- On the basis of the assumed structure of the loss characteristic, a differential equation is derived, as in the case of the Chebyshev approximation.
- After considerable mathematical complexity, the differential equation obtained is solved through the use of *elliptic functions*, and the parameters of the transfer function are deduced.

Elliptic Approximation *Cont'd*

- The passband loss is assumed to oscillate between zero and a prescribed maximum A_p and the stopband loss is assumed to oscillate between infinity and a prescribed minimum A_s .
- On the basis of the assumed structure of the loss characteristic, a differential equation is derived, as in the case of the Chebyshev approximation.
- After considerable mathematical complexity, the differential equation obtained is solved through the use of *elliptic functions*, and the parameters of the transfer function are deduced.

The approximation owes its name to the use of elliptic functions in the derivation.

Elliptic Approximation *Cont'd*

- The passband and stopband edges and cutoff frequency of a *normalized* elliptic approximation are defined as follows:

$$\omega_p = \sqrt{k}, \quad \omega_a = \frac{1}{\sqrt{k}}, \quad \omega_c = \sqrt{\omega_a \omega_p} = 1$$

Constants k and k_1 given by

$$k = \frac{\omega_p}{\omega_a} \quad \text{and} \quad k_1 = \left(\frac{10^{0.1A_p} - 1}{10^{0.1A_a} - 1} \right)^{1/2}$$

are known as the *selectivity* and *discrimination* constants.

Elliptic Approximation *Cont'd*

- A normalized elliptic lowpass filter with a selectivity factor k , passband edge $\omega_p = \sqrt{k}$, stopband edge $\omega_a = 1/\sqrt{k}$, a maximum passband loss of A_p dB, and a minimum stopband loss equal to or in excess of A_a dB has a transfer function of the form

$$H_N(s) = \frac{H_0}{D_0(s)} \prod_{i=1}^r \frac{s^2 + a_{0i}}{s^2 + b_{1i}s + b_{0i}}$$

where

$$r = \begin{cases} \frac{n-1}{2} & \text{for odd } n \\ \frac{n}{2} & \text{for even } n \end{cases}$$

and

$$D_0(s) = \begin{cases} s + \sigma_0 & \text{for odd } n \\ 1 & \text{for even } n \end{cases}$$

Elliptic Approximation *Cont'd*

- A normalized elliptic lowpass filter with a selectivity factor k , passband edge $\omega_p = \sqrt{k}$, stopband edge $\omega_a = 1/\sqrt{k}$, a maximum passband loss of A_p dB, and a minimum stopband loss equal to or in excess of A_a dB has a transfer function of the form

$$H_N(s) = \frac{H_0}{D_0(s)} \prod_{i=1}^r \frac{s^2 + a_{0i}}{s^2 + b_{1i}s + b_{0i}}$$

where

$$r = \begin{cases} \frac{n-1}{2} & \text{for odd } n \\ \frac{n}{2} & \text{for even } n \end{cases}$$

and

$$D_0(s) = \begin{cases} s + \sigma_0 & \text{for odd } n \\ 1 & \text{for even } n \end{cases}$$

- The parameters of the transfer function can be obtained by using the formulas in the next three slides in sequence in the order shown.

$$k' = \sqrt{1 - k^2}$$

$$q_0 = \frac{1}{2} \left(\frac{1 - \sqrt{k'}}{1 + \sqrt{k'}} \right)$$

$$q = q_0 + 2q_0^5 + 15q_0^9 + 150q_0^{13}$$

$$D = \frac{10^{0.1A_a} - 1}{10^{0.1A_p} - 1}$$

$$n \geq \frac{\log 16D}{\log(1/q)} \quad (\text{round up to the next integer})$$

$$\Lambda = \frac{1}{2n} \ln \frac{10^{0.05A_p} + 1}{10^{0.05A_p} - 1}$$

$$\sigma_0 = \left| \frac{2q^{1/4} \sum_{m=0}^{\infty} (-1)^m q^{m(m+1)} \sinh[(2m+1)\Lambda]}{1 + 2 \sum_{m=1}^{\infty} (-1)^m q^{m^2} \cosh 2m\Lambda} \right|$$

Elliptic Approximation *Cont'd*

$$W = \sqrt{(1 + k\sigma_0^2) \left(1 + \frac{\sigma_0^2}{k}\right)}$$

$$\Omega_i = \frac{2q^{1/4} \sum_{m=0}^{\infty} (-1)^m q^{m(m+1)} \sin \frac{(2m+1)\pi\mu}{n}}{1 + 2 \sum_{m=1}^{\infty} (-1)^m q^{m^2} \cos \frac{2m\pi\mu}{n}}$$

$$\text{where } \mu = \begin{cases} i & \text{for odd } n \\ i - \frac{1}{2} & \text{for even } n \end{cases} \quad i = 1, 2, \dots, r$$

$$V_i = \sqrt{(1 - k\Omega_i^2) \left(1 - \frac{\Omega_i^2}{k}\right)}$$

Elliptic Approximation *Cont'd*

$$a_{0i} = \frac{1}{\Omega_i^2}$$

$$b_{0i} = \frac{(\sigma_0 V_i)^2 + (\Omega_i W)^2}{(1 + \sigma_0^2 \Omega_i^2)^2}$$

$$b_{1i} = \frac{2\sigma_0 V_i}{1 + \sigma_0^2 \Omega_i^2}$$

$$H_0 = \begin{cases} \sigma_0 \prod_{i=1}^r \frac{b_{0i}}{a_{0i}} & \text{for odd } n \\ 10^{-0.05A_p} \prod_{i=1}^r \frac{b_{0i}}{a_{0i}} & \text{for even } n \end{cases}$$

Elliptic Approximation *Cont'd*

- Because of the fact that the filter order is *rounded up* to the next integer, the minimum stopband loss is usually oversatisfied.

Elliptic Approximation *Cont'd*

- Because of the fact that the filter order is *rounded up* to the next integer, the minimum stopband loss is usually oversatisfied.
- The actual minimum stopband loss is given by the following formula:

$$A_a = A(\omega_a) = 10 \log \left(\frac{10^{0.1A_p} - 1}{16q^n} + 1 \right)$$

Elliptic Approximation *Cont'd*

- Because of the fact that the filter order is *rounded up* to the next integer, the minimum stopband loss is usually oversatisfied.
- The actual minimum stopband loss is given by the following formula:

$$A_a = A(\omega_a) = 10 \log \left(\frac{10^{0.1A_p} - 1}{16q^n} + 1 \right)$$

- The loss of an elliptic filter is usually calculated by using the transfer function, i.e.,

$$A(\omega) = 20 \log \frac{1}{|H(j\omega)|}$$

Elliptic Approximation *Cont'd*

- Because of the fact that the filter order is *rounded up* to the next integer, the minimum stopband loss is usually oversatisfied.
- The actual minimum stopband loss is given by the following formula:

$$A_a = A(\omega_a) = 10 \log \left(\frac{10^{0.1A_p} - 1}{16q^n} + 1 \right)$$

- The loss of an elliptic filter is usually calculated by using the transfer function, i.e.,

$$A(\omega) = 20 \log \frac{1}{|H(j\omega)|}$$

(See textbook for details.)

Bessel-Thomson Approximation

- Ideally, the group delay of a filter should be constant; equivalently, the phase shift should be a linear function of frequency to minimize delay distortion (see Sec. 5.7).

Bessel-Thomson Approximation

- Ideally, the group delay of a filter should be constant; equivalently, the phase shift should be a linear function of frequency to minimize delay distortion (see Sec. 5.7).
- Since the only objective in the approximations described so far is to achieve a specific loss characteristic, there is no reason for the phase characteristic to turn out to be linear.

Bessel-Thomson Approximation

- Ideally, the group delay of a filter should be constant; equivalently, the phase shift should be a linear function of frequency to minimize delay distortion (see Sec. 5.7).
- Since the only objective in the approximations described so far is to achieve a specific loss characteristic, there is no reason for the phase characteristic to turn out to be linear.

In fact, it turns out to be highly nonlinear, as one might expect, particularly in the elliptic approximation.

Bessel-Thomson Approximation

- Ideally, the group delay of a filter should be constant; equivalently, the phase shift should be a linear function of frequency to minimize delay distortion (see Sec. 5.7).
- Since the only objective in the approximations described so far is to achieve a specific loss characteristic, there is no reason for the phase characteristic to turn out to be linear.

In fact, it turns out to be highly nonlinear, as one might expect, particularly in the elliptic approximation.

- The last approximation in Chap. 11, namely, the *Bessel-Thomson approximation*, is derived on the assumption that the group delay is *maximally flat* at zero frequency.

Bessel-Thomson Approximation

- Ideally, the group delay of a filter should be constant; equivalently, the phase shift should be a linear function of frequency to minimize delay distortion (see Sec. 5.7).
- Since the only objective in the approximations described so far is to achieve a specific loss characteristic, there is no reason for the phase characteristic to turn out to be linear.

In fact, it turns out to be highly nonlinear, as one might expect, particularly in the elliptic approximation.

- The last approximation in Chap. 11, namely, the *Bessel-Thomson approximation*, is derived on the assumption that the group delay is *maximally flat* at zero frequency.
- As in the Butterworth and Chebyshev approximations, the loss function is a polynomial. Hence the Bessel-Thomson approximation is essentially a *lowpass* approximation.

- The transfer function for a *normalized* Bessel-Thomson approximation is given by

$$H(s) = \frac{b_0}{\sum_{i=0}^n b_i s^i} = \frac{b_0}{s^n B(1/s)}$$

where

$$b_i = \frac{(2n - i)!}{2^{n-i} i! (n - i)!}$$

Bessel-Thomson Approximation *Cont'd*

- The transfer function for a *normalized* Bessel-Thomson approximation is given by

$$H(s) = \frac{b_0}{\sum_{i=0}^n b_i s^i} = \frac{b_0}{s^n B(1/s)}$$

where

$$b_i = \frac{(2n - i)!}{2^{n-i} i! (n - i)!}$$

- The group-delay is 1 s. An arbitrary delay can be obtained by replacing s by $\tau_0 s$ where τ_0 is a constant.

Bessel-Thomson Approximation *Cont'd*

- The transfer function for a *normalized* Bessel-Thomson approximation is given by

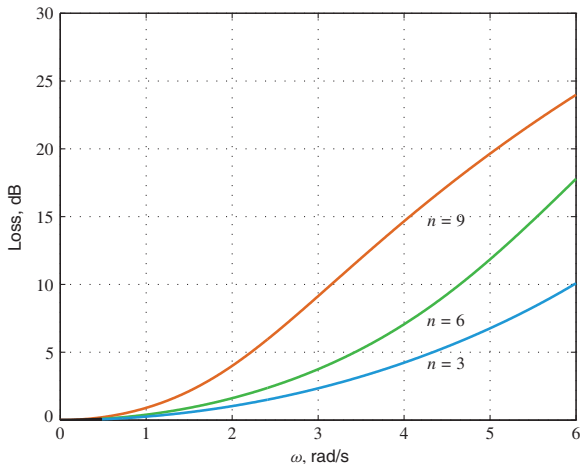
$$H(s) = \frac{b_0}{\sum_{i=0}^n b_i s^i} = \frac{b_0}{s^n B(1/s)}$$

where

$$b_i = \frac{(2n - i)!}{2^{n-i} i! (n - i)!}$$

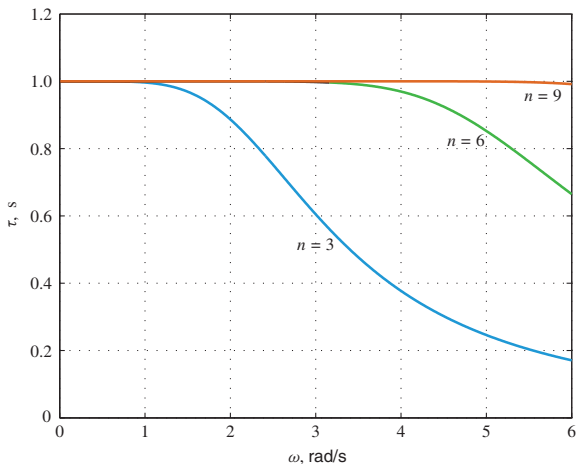
- The group-delay is 1 s. An arbitrary delay can be obtained by replacing s by $\tau_0 s$ where τ_0 is a constant.
- Function $B(\cdot)$ is a *Bessel polynomial*, and $s^n B(1/s)$ can be shown to have zeros in the left-half s plane, i.e., *the Bessel-Thomson approximation represents stable analog filters.*

- Typical loss characteristics:



Bessel-Thomson Approximation *Cont'd*

- Typical delay characteristics:



*This slide concludes the presentation.
Thank you for your attention.*